

Anti-H_LILRB1(ILT2) mIgG1 Antibody(12D12)

Product information

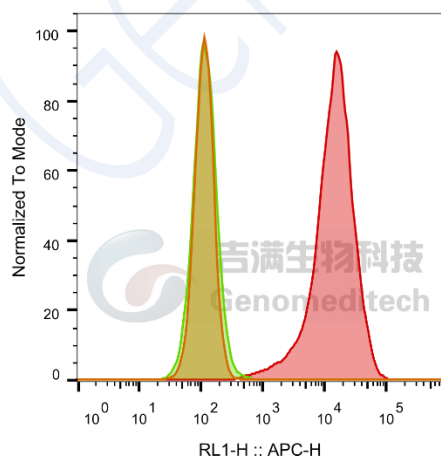
GM-27366AB-10	10 µg
GM-27366AB-100	100 µg
GM-27366AB-1000	1 mg

Antibody Information

Species Reactivity	Human
Clone	12D12
Source/Isotype	Monoclonal mouse IgG1, κ
Application	Flow cytometry; Activation assay
Other Names	CD85J, ILT-2, LIR-1, LIR1, MIR-7, MIR7, PIR-B, PIRB
Gene ID	Q8NHL6(human)
Storage	Store at 2-8°C short term (1-2 weeks).Store at ≤ -20°C long term. Avoid repeated freeze-thaw.
Formulation	Phosphate-buffered solution, pH 7.2.
Endotoxin	< 1 EU/mg, determined by LAL gel clotting assay

Data Examples

Flow cytometry H_LILRB1(ILT2) CHO-K1 Cell Line (Catalog # GM-C15859) was stained with Anti-H_LILRB1(ILT2) mIgG1 Antibody(12D12) or isotype control antibody.



SampleID	Geometric Mean : RL1-H
CHO-K1 anti-H_LILRB1+APC-2nd Ab	113
CHO-K1 H_LILRB1 M_IgG+APC-2nd Ab	117
CHO-K1 H_LILRB1 anti-H_LILRB1+APC-2nd Ab	13146

Fig. FACS

Version:0.3.2.240521

Activation assay

Anti-H_LILRB1(ILT2) mIgG1 Antibody(12D12) activates the H_LILRB1(ILT2) Reporter Jurkat Cell Line (Catalog # GM-C15867).

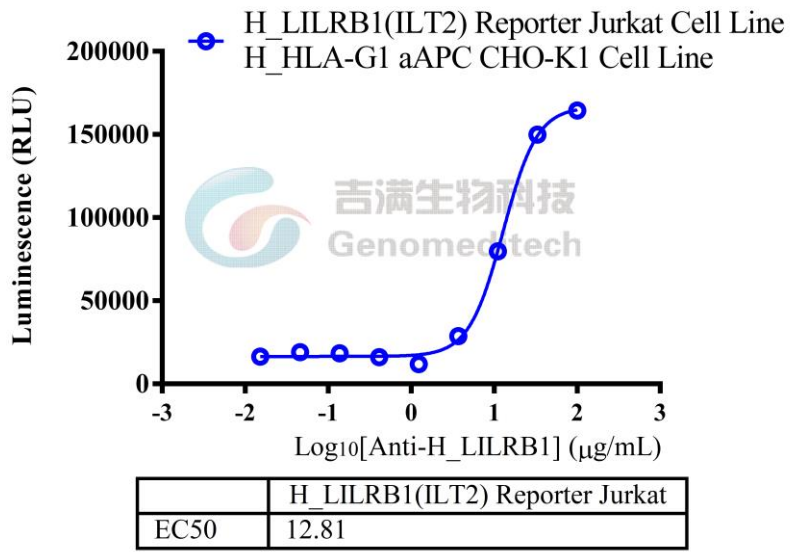


Fig. assay